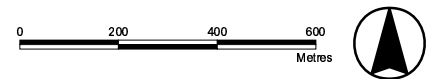
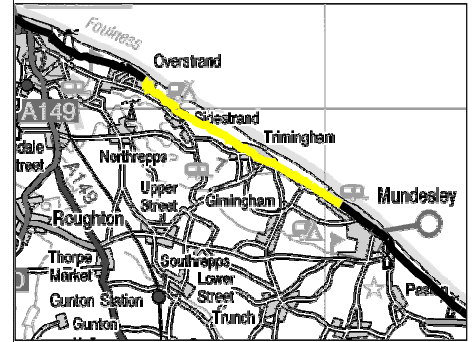
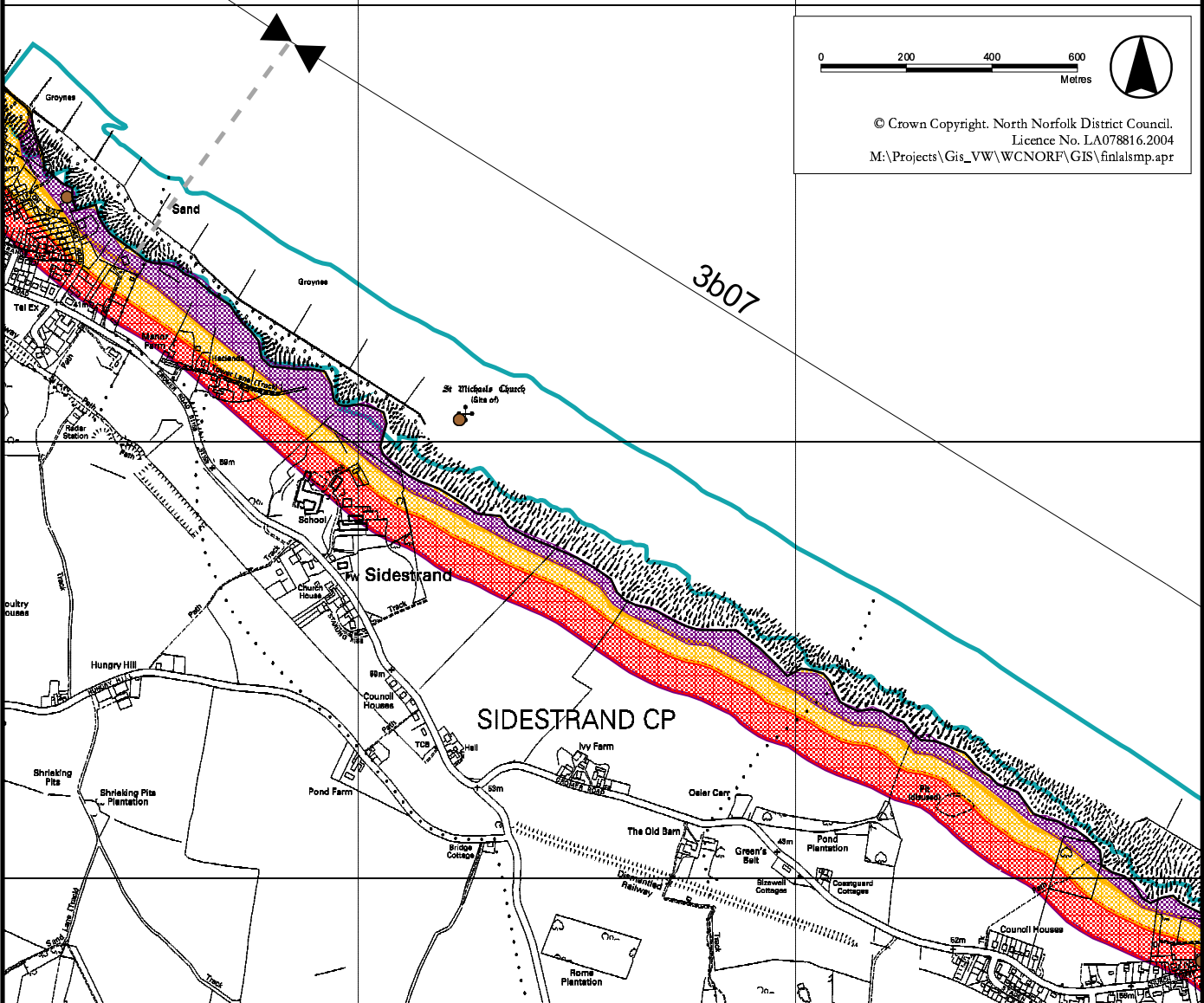


# Kelling to Lowestoft Ness Shoreline Management Plan

## Policy Unit 3b07: Overstrand to Mundesley (1 of 3)



© Crown Copyright. North Norfolk District Council.  
Licence No. LA078816.2004  
M:\Projects\Gis\_VW\WCNORF\GIS\finalsmp.apr



### POLICY (FOR FULL DETAILS SEE RELEVANT POLICY STATEMENT)

From Present Day:	Medium-Term:	Long-Term:
Allow retreat through no active intervention	Allow retreat through no active intervention	Allow retreat through no active intervention

- Indicative erosion zone up to 2025
- Indicative erosion zone up to 2105
- Policy Unit boundary
- Indicative erosion zone up to 2055
- Environmental/Cultural Heritage**
- National Nature Conservation Designation
- Important Heritage Sites
- International and National Nature Conservation Designation
- 2003 Indicative Floodplain © Environment Agency